

# OPI | GROUP

Opificio Progettazioni Industriali

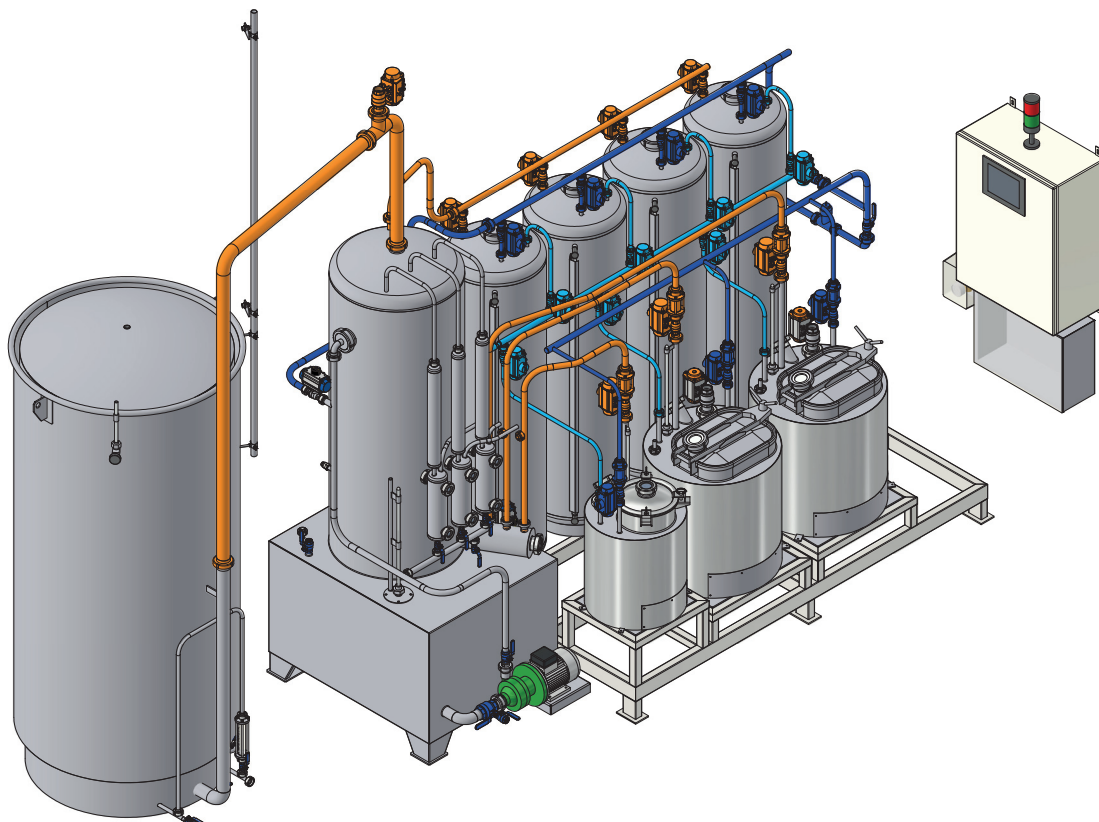
# JEWELRY

---



## COPPER CORE DISSOLUTION

Dissolvers by OPI GROUP are based on an innovative chemical and technical principle, which guarantees the preservation of the final fineness of the alloy with the complete removal of copper traces from the manufactured item. One of the main features of this processing system is the **closed cycle fume reduction system**, which allows no emissions into the atmosphere, thus making this equipment a zero impact system. Our machines represent the safest and most economical solution for dissolving copper core in gold manufacture: 14 Kt. and 18 Kt.



MODEL	DR30	DR100
CAPACITY lt	30	100
POWER kW	0,55	1,5
HEATING POWER kW	3,00	4,50
OVERALL DIMENSIONS mm	2000X1000XH2000	2500x1500xH2500

The dimensions are to be considered INDICATIVE and without stairs and/or walkways.



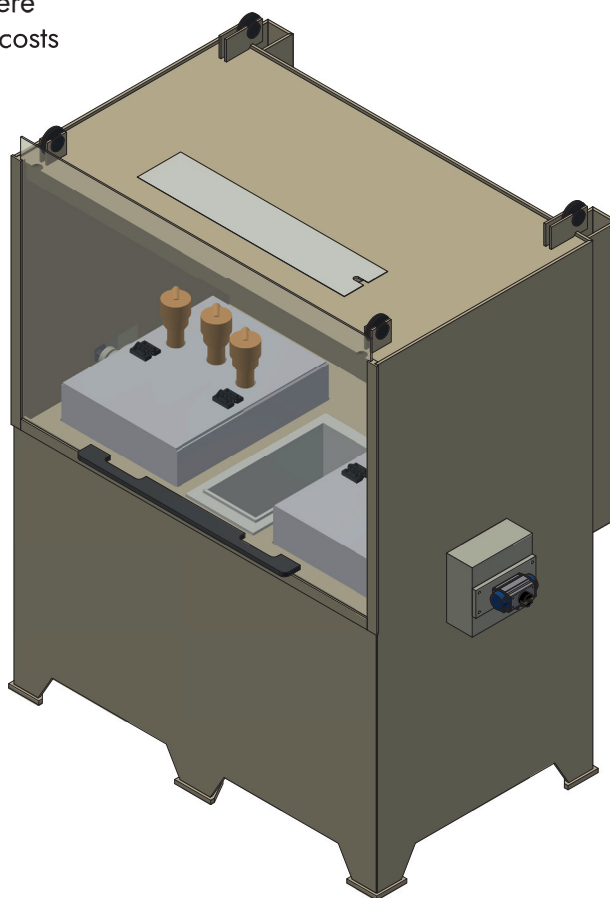
## LOW TITLE COPPER CORE DISSOLUTION

The system developed by OPI group guarantees an excellent process of dissolving the copper core in very low karat alloys, for example alloys whose gold content does not exceed 250/1000.

The solution used for this process is a slightly acidic solution assisted by the injection of a catalyst throughout the process.

The advantages of this innovative process are:

- A) Recycling the solution with consequent recovery of dissolved copper
- B) Very low emissions into the atmosphere
- C) Limited operating and management costs



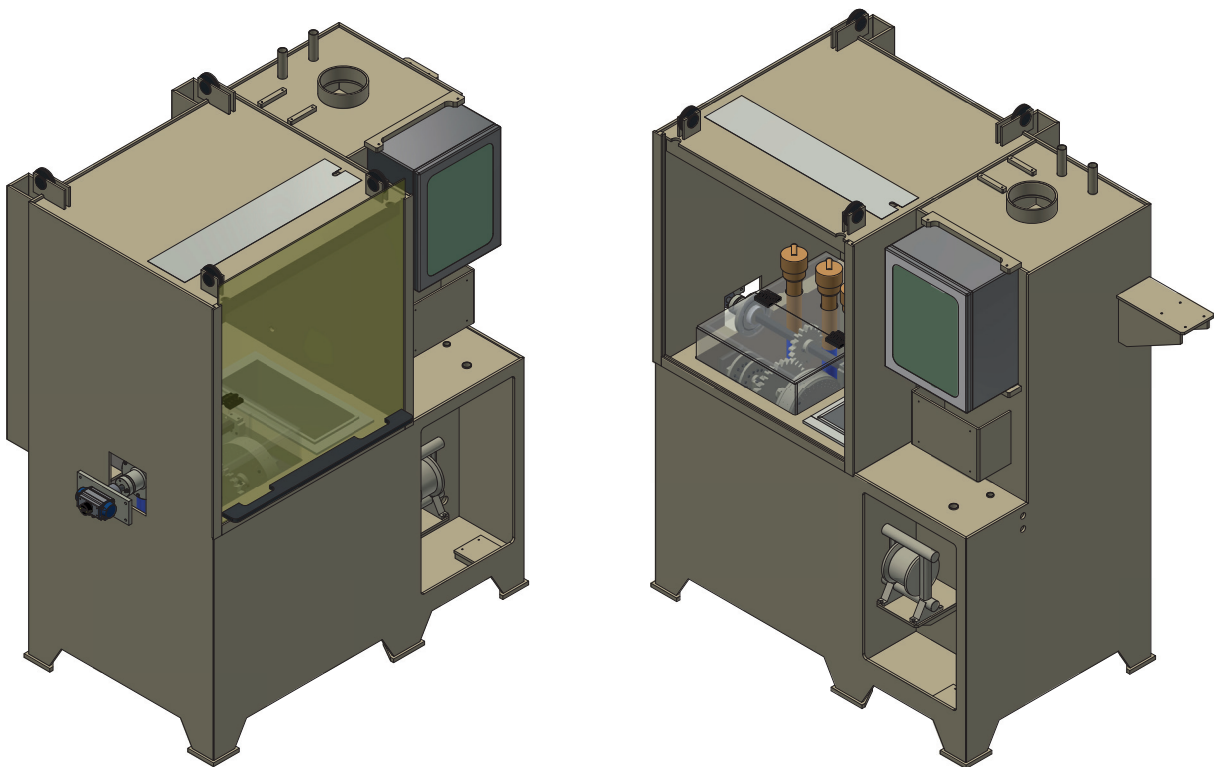
MODEL	HLK50	HLK100
CAPACITY lt	50	100
POWER kW	0,55	1,5
HEATING POWER kW	6,00	12,00
OVERALL DIMENSIONS mm	2000X1000XH2000	2500x1500xH2500

The dimensions are to be considered INDICATIVE and without stairs and/or walkways.



## IRON CORE DISSOLUTION

Iron dissolvers by OPI GROUP are based on an innovative chemical and technical principle, which guarantees the preservation of the final fineness of the alloy with the complete removal of copper traces from the manufactured item. The iron dissolution system uses a hydrochloric acid (HCL) bath in a heated tank made of PVDF plastic material, equipped with a rotating movement function to allow the solution to penetrate all the manufactured items. Smoke neutralization takes place in smoke reduction towers sized according to the customer's needs. The dimensioning and design of the system, in term of both quantities to be processed and positioning, will be decided together with the customer.



MODEL	DRFE10	DRFE20	DRFE40
CAPACITY lt	50	100	200
POWER kW	0,55	1,5	1,5
HEATING POWER kW	6,00	12,00	18,00
OVERALL DIMENSIONS mm	2000X1000XH2000	2500x1000xH2500	2500x1500xH2500

The dimensions are to be considered INDICATIVE and without stairs and/or walkways.

